

Product Sheet

H_CDH17 HCT116 Cell Line

Catalog number: GM-C30949

Version 3.3.1.241219

Description	H_CDH17 HCT116 Cell Line is a clonal stable HCT116 cell line that constitutively expresses the human CDH17 gene, constructed using lentiviral technology.
Quantity	5E6 Cells per vial, 1 mL
Product Format	1 vial of frozen cells
Shipping	Shipped on dry ice
Storage Conditions	Liquid nitrogen immediately upon receipt
Target	Human_CDH17
Gene ID/Uniprot ID	Q12864(AA Met 1 - Ile 808)
Host Cell	HCT116
Recovery Medium	McCoy's 5A+10% FBS+1% P.S
Growth medium	McCoy's 5A+10% FBS+1% P.S+10 µg/mL Blasticidin+0.5 µg/mL Puromycin
Note	/
Freezing Medium	90% FBS+10% DMSO
Growth properties	Adherent
Growth Conditions	37°C, 5% CO ₂
Mycoplasma Testing	The cell line has been screened to confirm the absence of Mycoplasma species.
Safety considerations	Biosafety Level 2
Note	It is recommended to expand the cell culture and store a minimum of 10 vials at an early passage for potential future use.

Materials

Reagent	Manufacturer/Catalogue No.
Puromycin	Genomeditech/ GM-040401
Blasticidin	Genomeditech/ GM-040404
Pen/Strep	Thermo/15140-122
Fetal Bovine Serum	Thermo/10099141
McCoy's 5A	Viva Cell BIOSCIENCES/C3020-0500
Anti-CDH17 hIgG1 Antibody(BI-905711)	Genomeditech/ GM-52672AB

Figures

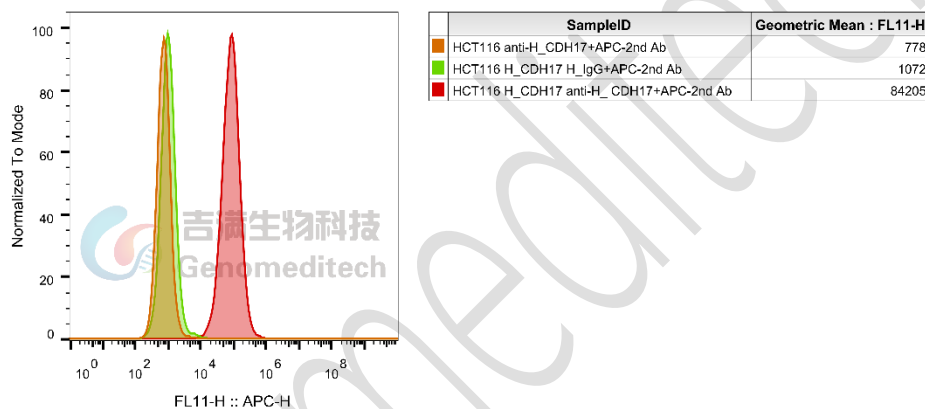


Figure 1 | H_CDH17 HCT116 Cell Line (Cat. GM-C30949) was determined by flow cytometry using Anti-CDH17 hIgG1 Antibody (Cat. [GM-52672AB](#)).

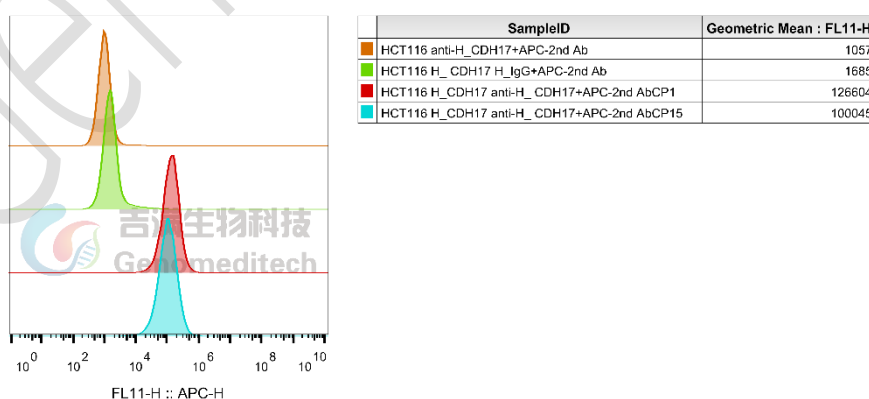


Figure 2 | The passage stability of the H_CDH17 HCT116 Cell Line (Cat. GM-C30949) was determined by flow cytometry using Anti-CDH17 hIgG1 Antibody (Cat. [GM-52672AB](#)).

Cell Recovery

Recovery Medium: McCoy's 5A+10% FBS+1% P.S

To insure the highest level of viability, thaw the vial and initiate the culture as soon as possible upon receipt. If upon arrival, continued storage of the frozen culture is necessary, it should be stored in liquid nitrogen vapor phase and not at -70°C. Storage at -70°C will result in loss of viability.

- a) Thaw the vial by gentle agitation in a 37°C water bath. To reduce the possibility of contamination, keep the O-ring and cap out of the water. Thawing should be rapid (approximately 2 - 3 minutes).
- b) Remove the vial from the water bath as soon as the contents are thawed, and decontaminate by dipping in or spraying with 70% ethanol. All of the operations from this point on should be carried out under strict aseptic conditions.
- c) Transfer the vial contents to a centrifuge tube containing 5.0 mL complete culture medium and spin at approximately 176 x g for 5 minutes. Discard supernatant.
- d) Resuspend cell pellet with the recommended recovery medium. And dispense into appropriate culture dishes.
- e) Incubate the culture at 37°C in a suitable incubator. A 5% CO₂ in air atmosphere is recommended if using the medium described on this product sheet.

Cell Freezing

Freezing Medium: 90% FBS+10% DMSO

- a) Centrifuge at 176 x g for 3 minutes to collect cells.
- b) Resuspend the cells in pre-cooled freezing medium and adjust the cell density to 5E6 cells/mL.
- c) Aliquot 1 mL into each vial.
- d) Place the vial in a controlled-rate freezing container and store at -80°C for at least 1 day, then transfer to liquid nitrogen as soon as possible.

Cell passage

Growth medium: McCoy's 5A+10% FBS+1% P.S+10 µg/mL Blasticidin+0.5 µg/mL Puromycin

For the first 1 to 2 passages post-resuscitation, use the recovery medium. Once the cells have stabilized, switch to a growth medium.

- a) Remove and discard culture medium.
- b) Briefly rinse the cell layer with PBS to remove all traces of serum that contains trypsin inhibitor.
- c) Add 1.0 mL of 0.25% (w/v) Trypsin-EDTA solution to dish and observe cells under an inverted microscope until cell layer is dispersed (usually within 1 to 2 minutes at 37°C).
- d) Note: To avoid clumping do not agitate the cells by hitting or shaking the flask while waiting for the cells to detach. Cells that are difficult to detach may be placed at 37°C to facilitate dispersal.
- e) Add 2.0 mL of growth medium to mix well and aspirate cells by gently pipetting.
- f) After centrifugation, resuspend the pellet and add appropriate aliquots of the cell suspension to new culture vessels.
- g) Incubate cultures at 37°C.

Subcultivation Ratio: A subcultivation ratio of 1:3 - 1:4 is recommended

Medium Renewal: Every 1 to 2 days

Notes

- a) After the stabilization of the cell condition, there will be fewer dead cells post-passage, the cell growth rate will tend to stabilize, cell morphology will become uniform, and the cells will appear robust.

Sequence

CDH17 Q12864(Δ ICD)

MILQAHLHSLCLLMLYLATGYGQEGKFSGPLKPMTFISIYEGQEPSQIIFQFKANPPAVTFELTGETDNIFVIERE
 GLLYYNRALDRETRSTHNLQVAALDANGIIVEGVPVITIKVKDINDNRPTFLQSKYEGSVRQNSRPGKPFLLYV
 NATDLDDPATPNGQLYYQIVIQLPMMNNVMYFQINNKTGAISLTREGSQELNPAKNPSYNLVISVKDMGGQSE
 NSFSDDTTSVDIIVTENIWKAPKPVEMVENSTDPHPKITQVRWNDPGAQYSLVDKEKLPRFPFSIDQEGDIYVT
 QPLDREEKDAYVFYAVAKDEYGKPLSYPLEIHVKVKDINDNPPTCPSVTVFEVQENERLGNSIGTLTAHDRD
 EENTANSFLNYRIVEQTPKLPMDGLFLIQTAYAGMLQLAKQSLKKQDTPQYNLTIEVSDKDFKTLCFVQINVIDI
 NDQIPIFEKSDYGNLTLAEDTNIGSTILTIQATDADEPFTGSSKILYHIIKGDSEGRGLGVDTPHTNTGYVIIKPK
 LDFETAAVSNIWFKAENPEPLVFGVKYNASSFAKFTLIVTDVNEAPQFSQHVFQAKVSEDVAIGTKVGNVTAK
 DPEGLDISYSLRGDTRGWLKDIDHVTGEIFSVAPLDREAGSPYRVQVVATEVGGSSLSVSEFHLILMDVNDNP
 PRLAKDYTGFFCHPLSAPGSLIFEATDDDQHLFRGPHFTFSLGSGSLQNDWEVSKINGTHARLSTRHTEFEER
 EYVVLIRINDGGRPPLEGIVSLPVTFCSCVEGSCFRPAGHQGTGIPTVGMVAVGILLTLLVIGIILAVVFI

Related Products

CDH3	
Cynomolgus_CDH3 CHO-K1 Cell Line	H_CDH3 CHO-K1 Cell Line
H_CDH3 HEK-293 Cell Line	Anti-H_CDH3 hIgG1 Antibody
CDH6	
Cynomolgus_CDH6 CHO-K1 Cell Line	H_CDH6 CHO-K1 Cell Line
H_CDH6 HEK-293 Cell Line	Anti-H_CDH6 hIgG1 Antibody(H01L02)
Anti-CDH6 hIgG1 Reference Antibody (Ralubio)	
CDH17	
Cynomolgus_CDH17 HEK-293 Cell Line	Cynomolgus_CDH17(XP_005563762.1) HEK-293 Cell Line
H_CDH17 CHO-K1 Cell Line	H_CDH17 CT26 Cell Line
H_CDH17 HEK-293 Cell Line	H_CDH17 LLC1 Cell Line
H_CDH17 MC38 Cell Line	H_CDH17 RKO Cell Line
H_CDH17 SW480 Cell Line	H_CDH17(ΔEC1,Flag-EC2-7) HEK-293 Cell Line
H_CDH17(ΔEC1-2,Flag-EC3-7) HEK-293 Cell Line	H_CDH17(ΔEC1-3,Flag-EC4-7) HEK-293 Cell Line
H_CDH17(ΔEC1-4,Flag-EC5-7) HEK-293 Cell Line	H_CDH17(ΔEC1-5,Flag-EC6-7) HEK-293 Cell Line
H_CDH17(ΔEC1-6,Flag-EC7) HEK-293 Cell Line	Mouse_CDH17 HEK-293 Cell Line
Rat_CDH17 HEK-293 Cell Line	Rhesus_CDH17 HEK-293 Cell Line

Anti-CDH17 hIgG1 Antibody(BI-905711)	Anti-CDH17 hIgG1 Antibody(VHH1-28BB)
Anti-CDH17 hIgG1 Reference Antibody(BI-905711)	Human CDH17 Protein; His Tag
Mouse CDH17 Protein; His Tag	Biotinylated Human CDH17 Protein; His-Avi Tag
Cynomolgus CDH17 Protein; His Tag	

Limited Use License Agreement

Genomeditech (Shanghai) Co., Ltd grants to the Licensee all intellectual property rights, exclusive, non-transferable, and non-sublicensable rights of the Licensed Materials; Genomeditech (Shanghai) Co., Ltd will retain ownership of the Licensed Materials, cell line history packages, progeny, and the Licensed Materials including modified materials.

Between Genomeditech (Shanghai) Co., Ltd, and Licensee, Licensee is not permitted to modify cell lines in any way. The Licensee shall not share, distribute, sell, sublicense, or otherwise provide the Licensed Materials, or progenitors to third parties such as laboratories, departments, research institutions, hospitals, universities, or biotechnology companies for use other than for the purpose of outsourcing the Licensee's research.

Please refer to the Genomeditech Cell Line License Agreement for details.

Genomeditech